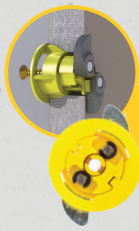


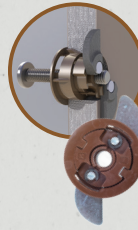
# GRIPIT

## FIXING HEAVY STUFF TO PLASTERBOARD



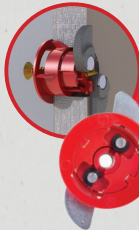
One yellow holds up to **71KG**

**15MM DRILL BIT**  
Curtain rails, blinds and picture frames



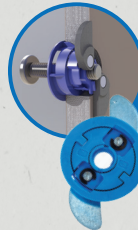
One brown holds up to **93KG**

**20MM DRILL BIT**  
AV equipment, cabinets and bathroom suites



One red holds up to **74KG**

**18MM DRILL BIT**  
Shelves, mirrors and shower units



One blue holds up to **113KG**

**25MM DRILL BIT**  
Wall mounted TVs, radiators, kitchen units

† Drill bits sold separately

Gripit Plasterboard Fixings are designed for use with all types of plasterboard installations. Using their uniquely designed slim gripping wings, the Gripit Fixing folds out in the gap behind the plasterboard to create a vice like grip and produce a secure fixing that can hold up to 113kg safely.

### BENEFITS

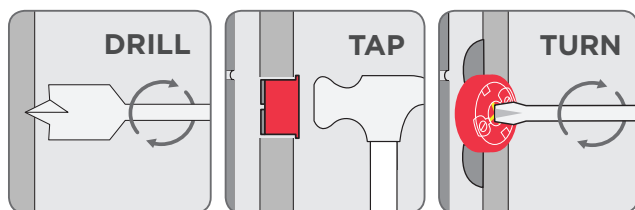
- Suitable for all plasterboard types (9.5mm to 15mm)
- No need for battening or additional anchor points
- Works on Dot & Dab and insulated plasterboard
- Removable and reusable

### PERFORMANCE INFORMATION

Loads\*

	15mm	18mm	20mm	25mm
Diameter (mm)	15	18	20	25
Length (mm)	11.5	11.5	11.5	11.5
Screw sizes diameter (mm)	4.0	5.0	M6	M8
Screw sizes length (mm)	25	30	30	30

Fit with a drill and screwdriver, simply...



### BASIC PERFORMANCE DATA

#### Tension

The force applied to the fixing is 'pulled' away from the wall.

	15mm	18mm	20mm	25mm
Substrate thickness (mm)	Up to 15mm	Up to 15mm	Up to 15mm	Up to 15mm
Min edge distance (mm)	20	24	28	28
Tension max (kg)	38	39	39	39
Tension safe (kg)	20	20	20	20

#### Shear

Weight suspended from a fixing, mounted in a vertical wall with a load or weight attached to that fixing and acting vertically downwards.

	15mm	18mm	20mm	25mm
Substrate thickness (mm)	Up to 15mm	Up to 15mm	Up to 15mm	Up to 15mm
Min edge distance (mm)	20	24	28	28
Shear max (kg)	142	148	185	225
Shear safe (kg)	71	74	93	113

\* Independently tested on 15mm plasterboard

## Cantilever

The weight applied along the length of a horizontal beam at a known distance from a vertical wall and acting vertically downwards.

	15mm			18mm			20mm			25mm		
	50mm	75mm	150mm	50mm	75mm	150mm	50mm	75mm	150mm	50mm	75mm	150mm
Cantilever max (kg)	60	54	32	64	56	36	72	58	48	80	62	50
Cantilever safe (kg)	30	27	16	32	28	18	36	29	24	40	31	25

The only self-drive that won't overtighten.



### BENEFITS

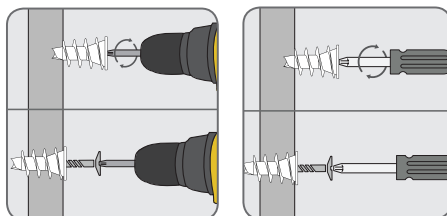
- Improved design includes inner cam that rotates once outer cam reaches maximum torque
- Addresses common issues faced by users
- Can be used on all plasterboard types
- Perfect to hang picture frames, light switches etc.

### PERFORMANCE INFORMATION

#### Dimensions

	Fixing length	Min thickness to supporting layer	Screw size
TwistIt self drive	28mm	35mm	3.0 x 30mm

Holds up to 20% more than other self-drives



Install with a screwdriver or drill

### Basic performance data

Performance data for single fixing without influence of edge distance and spacing.

### Loads\*

	Shear	Cantilever @ 100mm	Tension
Load	0.15kN	0.15kN	0.8kN

\* Independently tested on 15mm plasterboard

# MARXMAN™

## PROFESSIONAL MARKING TOOL

The perfect drilling companion for electrical, plumbing, building and DIY jobs.

### BENEFITS

- Trusted marking tool for Trade & DIY
- Marks a fixing point through fitting holes of various depths and diameters (up to 45mm)
- Marks all surfaces including brick, metal, wood, pebbledash, porcelain & ceramic
- Delivers a burst of removable green pigment
- 250+ bursts in every can

