

FANTOM

MAGNETIC DOORSTOP

HENDERSON

Innovative magnetic doorstop solution for swing doors and sliding doors

Overview

Fantom Magnetic Door Stop is an innovative door stop solution. The system has been designed specifically to minimise trip hazards. Unlike conventional door stops today, the Fantom Doorstop poses no trip hazard due to its innovative flush finish and non protruding pin.

The door stop has also been designed to produce a completely concealed finish. With the striker plate fitted underneath the door, there is no unsightly hardware on display and all moving parts are hidden underneath the doors.

The product is suitable for swing doors, swing doors within folding systems and sliding doors.

Features and Benefits

- No trip hazard - sits flush to the floor and is only activated when the door opens over the stop
- Stops sliding/swing doors - the neodymium magnet installed in the base of the door pulls the floor pin up and stops the door in the open or closed position
- Prevents damage - will stop the door and prevents damage to walls, even when the door is opened at high speed
- Holds door open - will hold the door open making it easy to pass through rooms and prevent doors slamming from drafts
- Easy to install - suitable for all floor surfaces including carpets, tiles, concrete and wood. A door to floor gap of 3 - 10mm is required, for larger gaps a packer is required



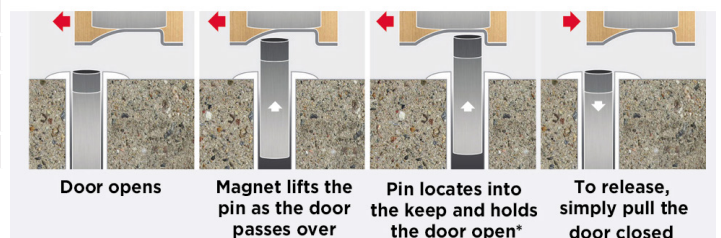
Product and Door Specification

| Short Code | For Use With | Finish | Min. Door Thickness | Min. Drilling Depth | | Hold Force |
|-------------|---------------|----------------|---------------------|---------------------|-------------|-------------------|
| | | | | Floor Sleeve | Magnet | |
| FANTOM/CL | Swing Doors | Clear | 35mm | 14mm x 48mm | 24mm x 20mm | 28.4N/2.9kg/6.4lb |
| FANTOM/S | | Satin | 35mm | 14mm x 48mm | 24mm x 20mm | 28.4N/2.9kg/6.4lb |
| FANTOM/PB | | Polished Brass | 35mm | 14mm x 48mm | 24mm x 20mm | 28.4N/2.9kg/6.4lb |
| FANTOMSL/CL | Sliding Doors | Clear | 35mm | 14mm x 48mm | 24mm x 20mm | 28.4N/2.9kg/6.4lb |
| FANTOMSL/S | | Satin | 35mm | 14mm x 48mm | 24mm x 20mm | 28.4N/2.9kg/6.4lb |
| FANTOMSL/PB | | Polished Brass | 35mm | 14mm x 48mm | 24mm x 20mm | 28.4N/2.9kg/6.4lb |

| Kit Contents | Material | |
|-----------------------------|--------------|--|
| N30 magnet (x 1) | Floor sleeve | Polycarbonate or cast alloy |
| Nylon striker plate (x1) | Magnet | N30 neodymium |
| Stainless steel screws (x2) | Pin | Low carbon steel/ themoplastic elastomer |
| Over mould pin (x1) | Striker | Nylon |
| Floor sleeve (x1) | | |

How it Works

Swing Doors



Sliding Doors



Accessories

| | | |
|-------------|--|--|
| FANTOM/PACK | For use when door to floor gap exceeds 15mm, multiple packers can be used on door gaps exceeding 20mm | |
| FANTOM/INST | 6 piece installation kit, includes 24mm spade bit, 14mm spade bit, 14mm masonry bit, 2.5mm timber bit, clean out brush and phillips head bit | |