



BASE BOARD

RESISTANT
BUILDING PRODUCTS LTD

Technical Data Sheet



Resistant Base Board is a high quality, high performance, A1 Non-combustible general purpose magnesium oxide building board. The boards are very robust, resistant to the effects of weather and dimensionally stable during the construction phase of the project. The board is dual faced (one side keyed / other side smooth) to increase flexibility of suitable applications.

Key Benefits

- Tested to BS 476 Part 4 Non-Combustible
- Weather Resistant during the construction phase
- Breathable and Vapour Permeable
- Robust & High Strength
- Excellent Dimensional Stability
- Easy to Handle
- Easy to Score & Snap or Machine Cut
- Good Edge Fixing Properties with Screw or Nail
- High Pull Out & Pull Through Strengths
- Low Carbon Manufacturing Process

Key:

1. Internal Lining Board (Multi-Pro).
2. Steel Frame.
3. Insulation.
4. Resistant Base Board 10/12.
5. Curtain Wall Bracket.
6. Steel or Timber Vertical Fixing Battens for External Render Carrier Board. (minimum 25mm Ventilated Cavity)
7. Rigid Insulation &/or 25mm clear Airspace for Render Carrier.
8. External Facade of Curtain Walling or Render Carrier. (Resistant Base Board 10/12)

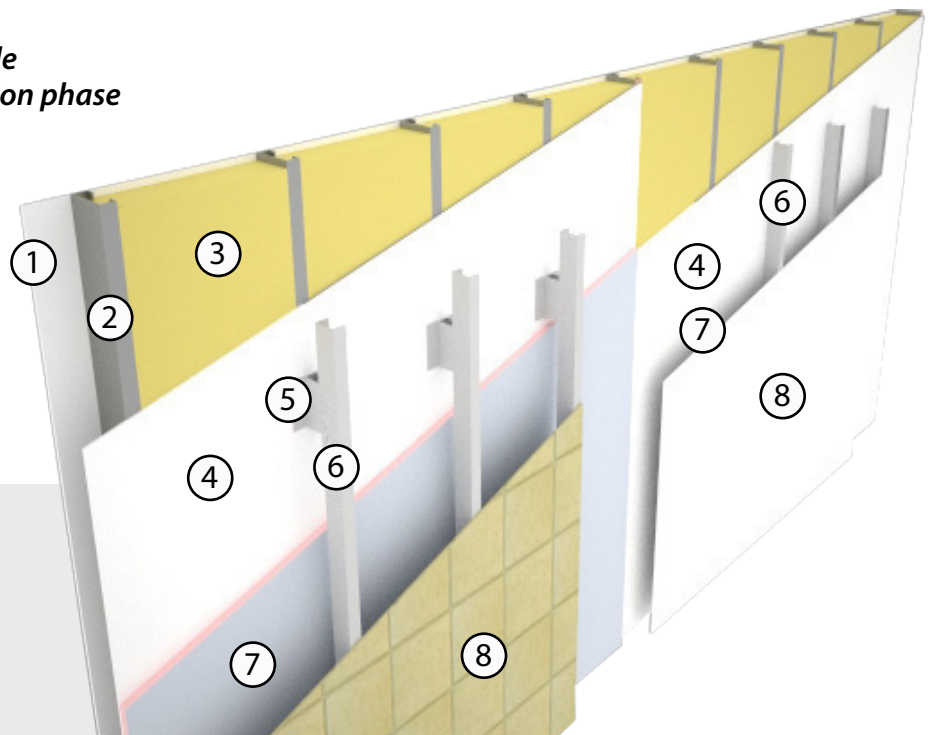
MANUFACTURE

Resistant Base Board is manufactured using inorganic substances, CaCO₃, MgO, MgCl₂ and alkaline resistant mesh.

The product is naturally cured using no energy through cold fusion unlike similar competitive products on the market which use autoclaving technology. This ensures that Resistant Base Board has a relatively low impact on the environment. Base Board achieves its superior strength and flexibility with the introduction of alkaline resistant glass fibre mesh within the Board. Consistent high quality of the product is maintained through a sophisticated digitally controlled process to ensure a superior finished Board always reaches our commitment to quality assurance.



baumit.com



Typical Steel Frame Build Up. Also Ideal for Hybrid or Timber Frame Structures

When fitting a 3-4mm gap should be left between boards. Joints should be taped over or sealant filled.

TYPICAL USES

Ideal for applications such as;

- Non-Combustible Sheathing for SFS
- Volumetric Infill
- Suitable Substrate for Tiles
- SIPS
- Pre-Insulated Panels
- Off-Site Modular Systems
- Render Carrier Board

Please note this is not a definitive list



www.resistant.co.uk



info@resistant.co.uk



+44 (0)28 9074 9400



+44 (0)28 9074 9420



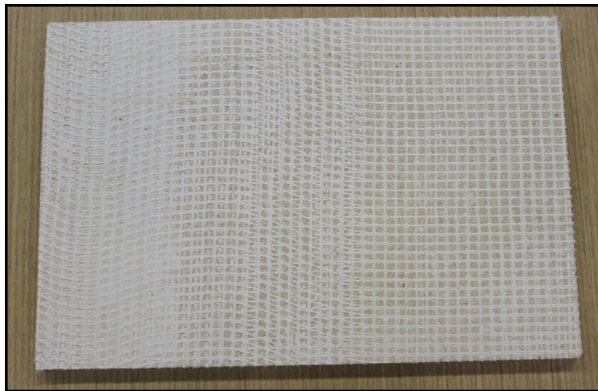
RESISTANT
BUILDING PRODUCTS LTD

BASE BOARD



Technical Data Sheet

Technical SPECIFICATION	Test Subject	Test	Result
	Density Dry (ex works)		1150 - 1200 Kg/m ³
	Reaction to Fire	BS 476 Part 4	Non-Combustible
	Thermal Conductivity at 50°C	BS EN 12664	0.307 W(m.K)
	Average Tensile Strength	BS EN 321	2.04 N/mm ²
	Tensile Strength (Perpendicular to plane)	BS EN 319	2.80 N/mm ²
	Bending Modulus (Average)	BS EN 310	5656 N/mm ²
	Bending Strength (mor) - wet	BS EN 12467	10mm 10.59 MPa Class 2 12mm 9.69 MPa Class 2
	Impact Strength		34 mm/mm ²
	Average Screw Withdrawal Strength	Brinell	81.9 N/mm ²
	Vapour Permeability	BSEN 12086	53 g/m ² /hour
	Change in thickness (Immersion in water 24hours)		0 - 0.2%
	Change in length (Immersion in water 24hours)		<1%



Base Board Keyed Surface



Base Board Smooth Surface

DIMENSIONS

Base Board is supplied as a rectangular board with square edges and is white in colour.

Thickness: 10mm & 12mm

Sizes: 1200 x 2400mm

Special size requirements are also available upon request depending on quantity required.

TOLERANCES

Length and Width: + / - 2mm

Thickness: + / - 0.2mm

Edge Straightness: 1mm / metre

Squareness of edge: < 3mm



www.resistant.co.uk



info@resistant.co.uk



+44 (0)28 9074 9400



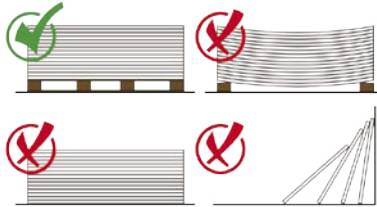
+44 (0)28 9074 9420



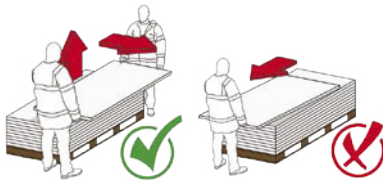
BASE BOARD

RESISTANT
BUILDING PRODUCTS LTD

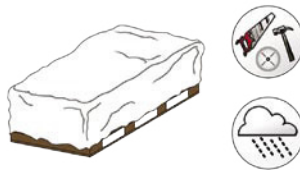
Technical Data Sheet



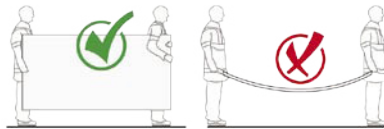
Resistant boards should be stored flat, raised from the ground on a pallet, in dry conditions indoors and be under cover. Boards should not be leant upright for long periods of time



Boards should always be lifted by 2 people and not dragged across each other to prevent unnecessary scratching or damage.



Any moisture allowed to infiltrate between the sheets will cause permanent surface staining. They should be protected from the weather and other trades on site at all times



Boards should be carried on edge and extra precaution should be taken to protect the visible front edge and corners.

SUPERIOR ATTRIBUTES

Apart from accepting a variety of painted/polished finishes, Resistant boards provide an excellent compatible surface to a wide range of finishing materials i.e. paints, tiles, veneers, laminates or indeed any finishing option that comes to the creative mind of an architect or interior designer. The acceptance of Resistant in the highly competitive international market stands testimony to its superior attributes



Fire Rated
Non-Flammable & Non-Combustible to BS 476 Part 4



Thermal Insulation Properties
Ability to withstand a high range of hot and cold cycles (Thermal Shock)



Impact Resistant
An ability to withstand abuse, including surface impact - 34 N/mm²



Low Carbon Manufacturing Process
A natural cured process with a chemical reaction using low levels of heat and a lengthy drying out stage



Moisture & Water Resistant
Resistant boards will not physically deteriorate when subjected to water or moisture during the construction phase



Rodent Resistant
Resistant to rodent infestation like mice, rats and insects



Easy and Fast to work
Simple to prepare and fix. Unique double faced (smooth or keyed) surfaces allow fast to fit of one board for Multiple Applications



Mould Resistant
Unlike paper faced/wood based products, Resistant does not contain cellulose, limiting mould growth



Breathability
Ensures a healthy, durable working building with a natural ability to absorb and release moisture



Chemically Stable
Produced from natural inorganic raw materials, resulting in a strong, durable chemically stable board



Non-Hazardous to Health
Will not cause harm to persons and/or the environment.

Boards should always be primed with an acrylic based primer, then finished with a suitable weather protective coat for permanent exposure.

For detailed fitting advice contact below.